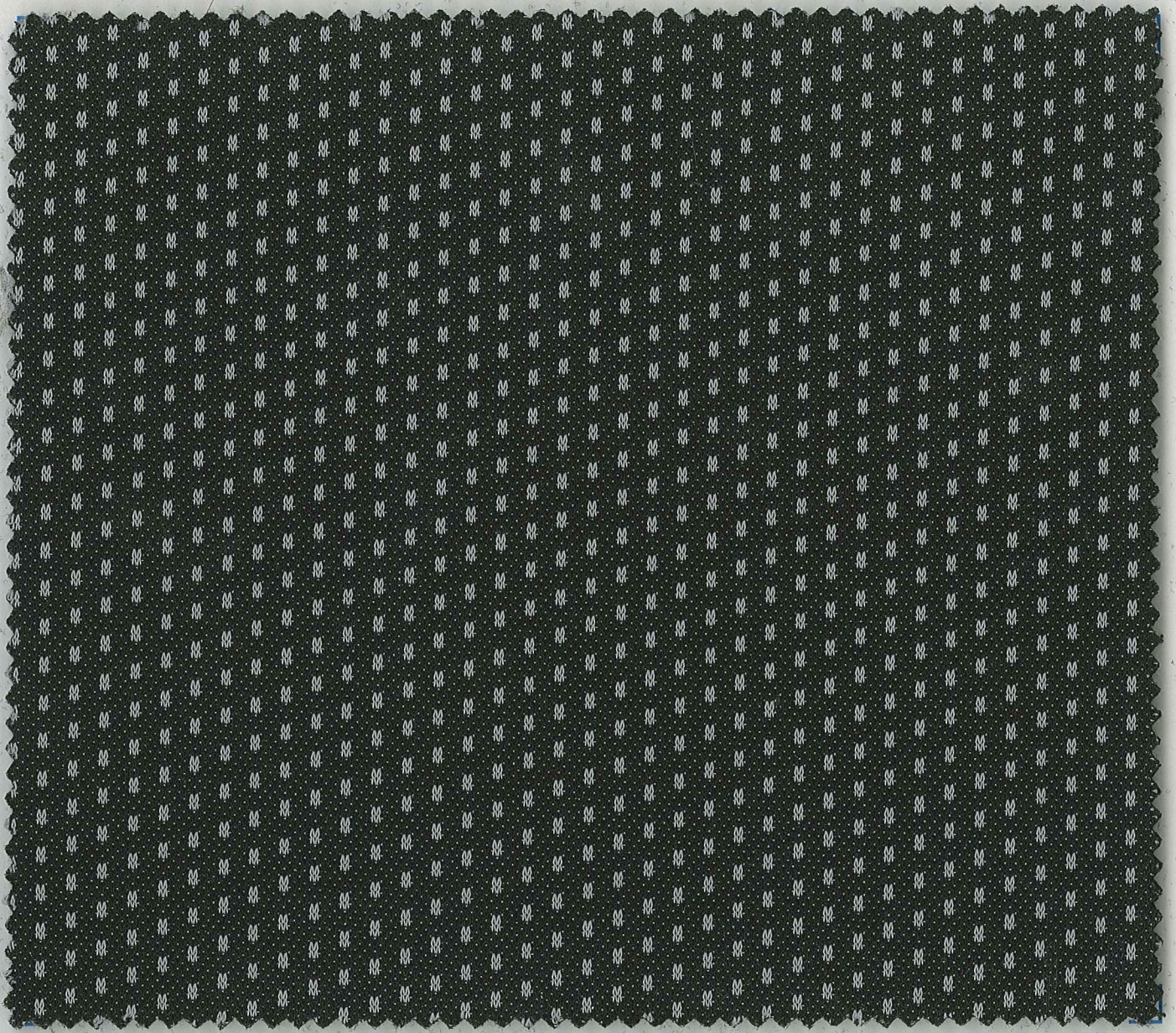


SERIE
PUNTOS

puntos[®]
color

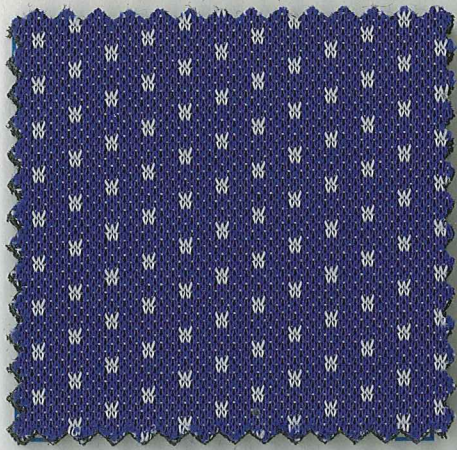
TAPICERÍAS Y SILLERÍAS



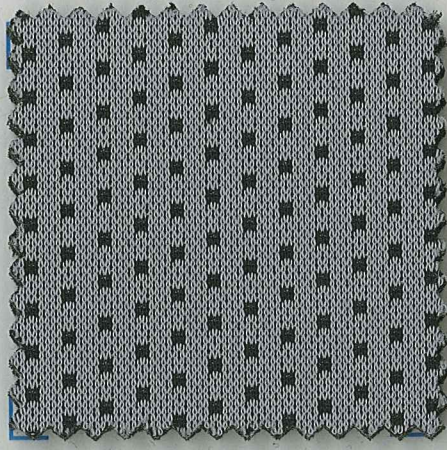
11

12

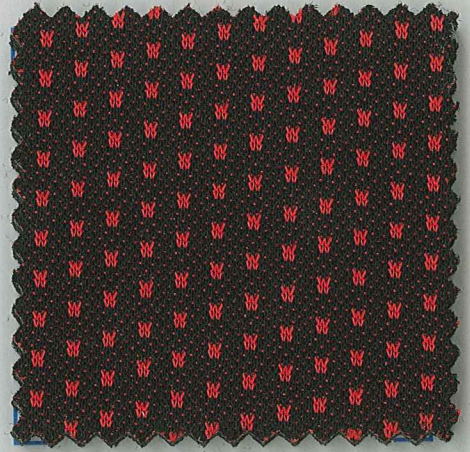
13



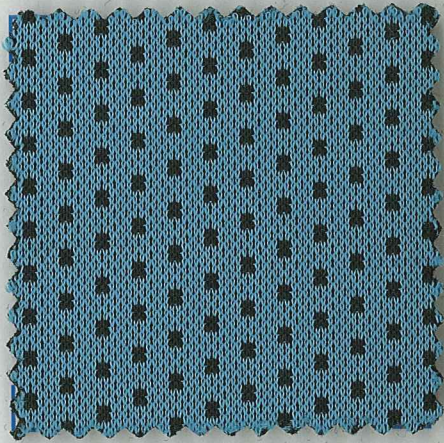
2



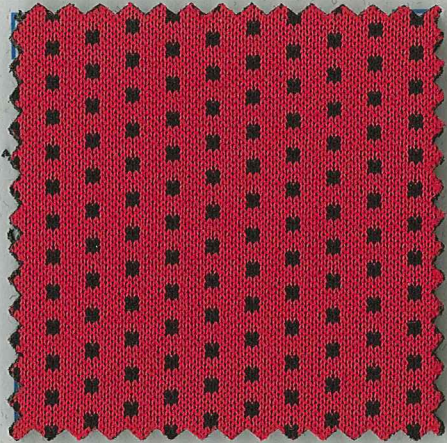
3



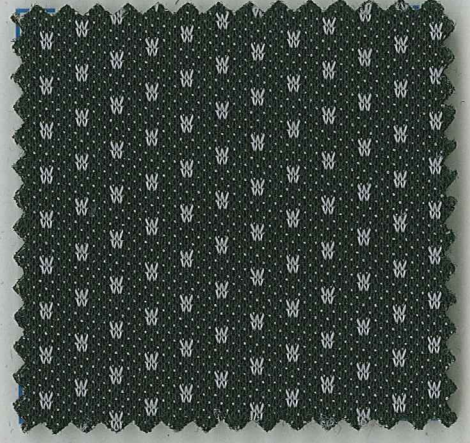
4



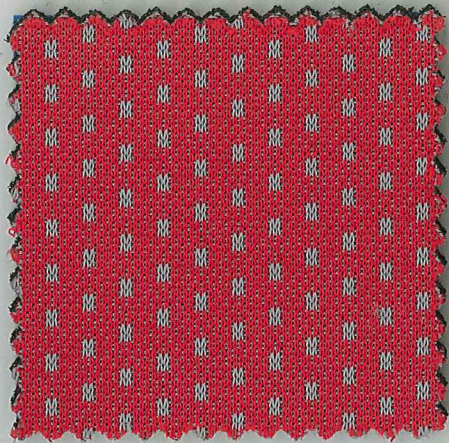
5



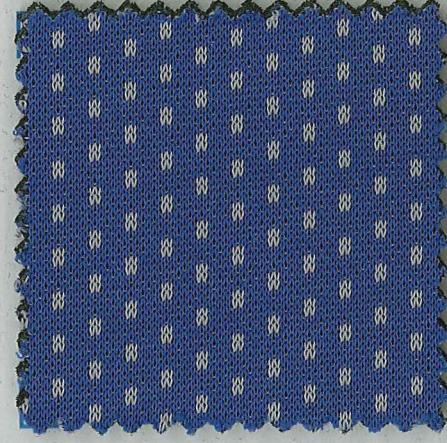
6



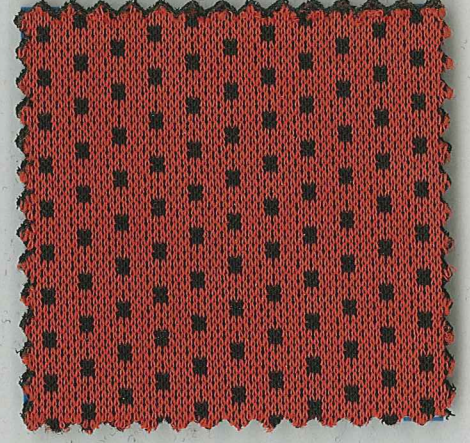
7



8



9



10

DATOS TÉCNICOS

	COMPOSICION COMPOSITION	PES 100%
	ANCHO PIEZA WIDTH PIECE	160 CM.
	PESO WEIGHT	SEGUN SERIE Y ACABADO WEAVED CHANGEABLE SERIES
ISO 12945 - 2	RESISTENCIA AL PILLING PILLING RESISTANCE	VALOR / VALUE 5
UNE-EN ISO 12.947	RESISTENCIA A LA ABRASION (MARTINDALE) ABRASION RESISTANCE (MARTINDALE)	+ 32.000 CICLOS / CICLES
UNE-EN ISO 105-X12:1996	SOLIDEZ AL FROTE SECO COLOUR FASTNESS TO DRY RUBBING	VALOR / VALUE 4/5
UNE-EN ISO 105-X12:1996	SOLIDEZ AL FROTE HUMEDO COLOUR FASTNESS TO WET RUBBING	VALOR / VALUE 4/5
UNE 2372790	CLASIFICACION AL FUEGO FIRE CLASIFICATION	M1
UNE-EN ISO 105-B02	SOLIDEZ A LA LUZ LIGHT FASTNESS	VALOR / VALUE 5
AATCC118:1984 3M TEST II	* OPCIONAL (ANTIMANCHAS) OLEORREPELENCIA OIL REPELLENCI TEST HIDORREPELENCIA WATER REPELLENCI TEST	
	* OPCIONAL TREVIRA CS	

ANTONIO GINER, S.L.

Carretera Alcudia, nº 9

Teléfono: 96 559 22 77 // Fax: 96 650 08 96

03829 COCENTAINA (Alicante)

e-mail: toniginer@terra.es