

S/ LUXOR

punto  
color®

TAPICERÍAS Y SILLERÍAS



1



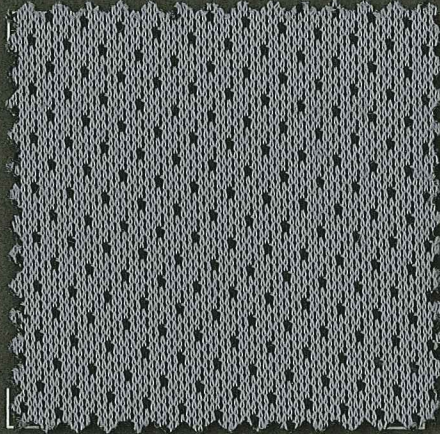
11

12

13



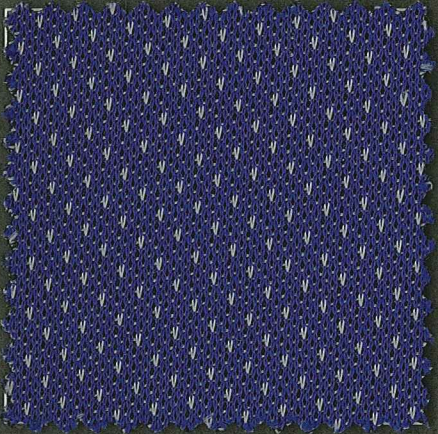
2



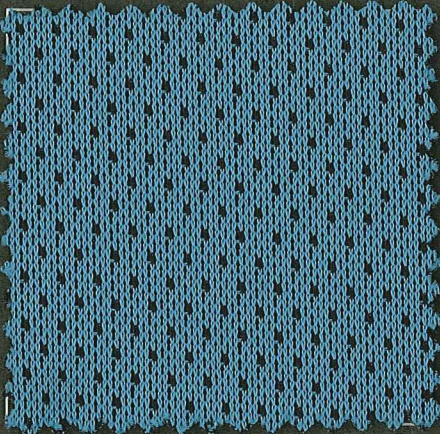
3



4



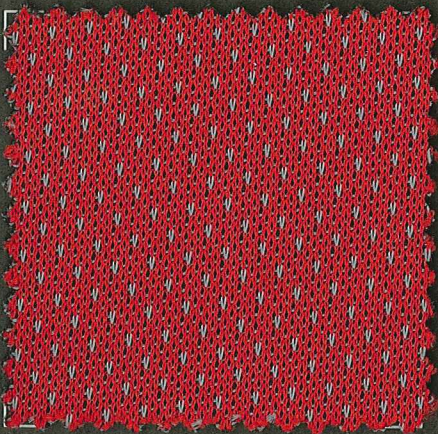
5



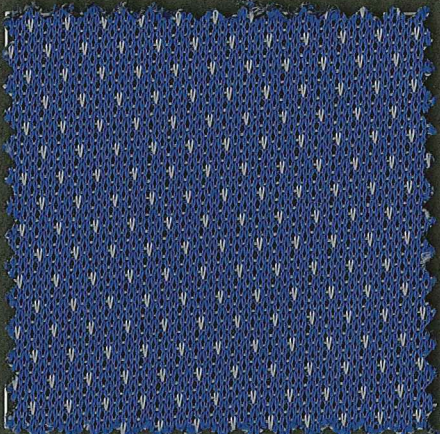
6



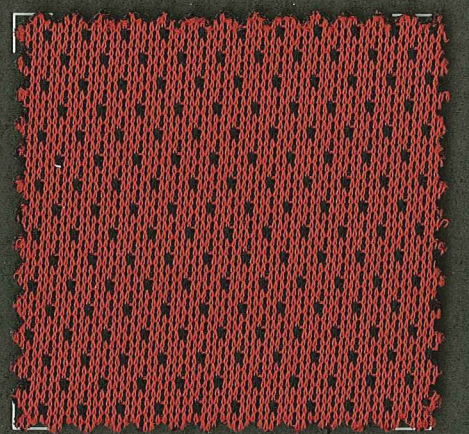
7



8



9



10

## DATOS TÉCNICOS

|  |   |   |
|--|---|---|
|  | COMPOSICIÓN<br>COMPOSITION  | TREVIRA CS  |
|  | ANCHO PIEZA<br>WIDTH PIECE  | 160 CM.   |
|  | PESO<br>WEIGHT  | SEGÚN SERIE Y ACABADO<br>WEAVED CHANGEABLE SERIES |
| ISO 12495 - 2  | RESISTENCIA AL PILLING<br>PILLING RESISTANCE  | VALOR / VALUE 5                                   |
| UNE-EN ISO 12.497                                      | RESISTENCIA A LA ABRASIÓN (MARTINTALE)<br>ABRASION RESISTANCE (MARTINTALE)  | + 32.000 CICLOS / CICLES                          |
| UNE-EN ISO 105-X12:1996                                | SOLIDEZ AL FROTE SECO<br>COLOUR FASTNESS TO DRY RUBBING   | VALOR / VALUE 4/5                                 |
| UNE EN 1021:2006 PARTE 1 Y<br>UNE EN 1021:2006 PARTE 2 | CLASIFICACIÓN AL FUEGO<br>FIRE CLASIFICATION  |   |
| UNE-EN ISO 105-X12:1996                                | SOLIDEZ AL FROTE HÚMEDO<br>COLOUR FASTNESS TO WET RUBBING   | VALOR / VALUE 4/5                                 |
| UNE-EN ISO 105-B02                                     | SOLIDEZ A LA LUZ<br>LIGHT FASTNESS  | VALOR / VALUE 5                                   |
| COLORIDO:<br>COLOUR MATCHING:                          | PUEDEN HABER PEQUEÑAS VARIACIONES<br>DE COLOR ENTRE DISTINTAS PARTIDAS,<br>PROPIO DE LA INDUSTRIA TEXTIL.<br>BATCH TO BATCH VARIATION IN SHADE<br>MAY OCCUR WITHIN COMMERCIAL<br>TOLERANCES |   |

## ANTONIO GINER, S.L.

Carretera Alcudia, nº 9

Teléfono: 96 559 22 77 // Fax: 96 650 08 96 // Móvil 660 699 758

03829 **COCENTAINA** (Alicante)

e-mail: [toniginer@terra.es](mailto:toniginer@terra.es)

[ventas@antonioginersl.com](mailto:ventas@antonioginersl.com)

[administración@antonioginersl.com](mailto:administración@antonioginersl.com)