

FIDIVI\*

TESSITURA VERGNANO

RADIO

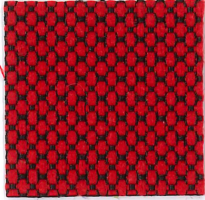
RADIO



4517



4017



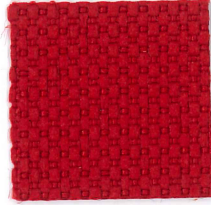
4528



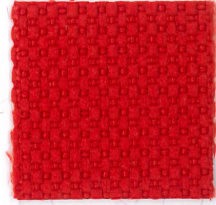
3594



3094



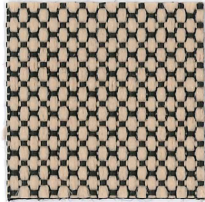
4028



4027



3082



1510



1008



2524



2024



1010



2536



2036

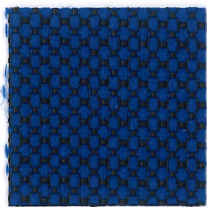




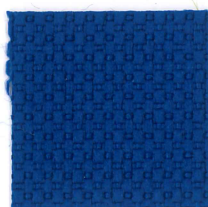
6598



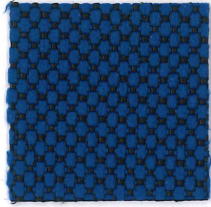
6098



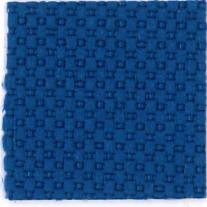
6571



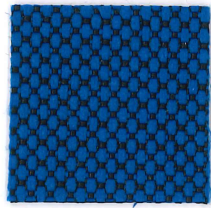
6071



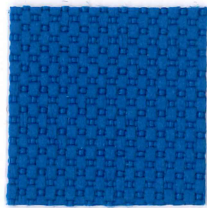
6512



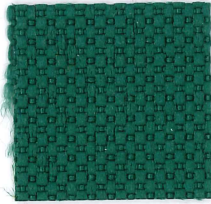
6012



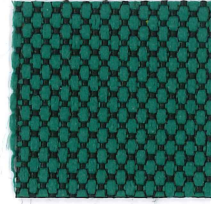
6575



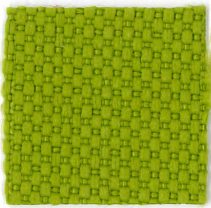
6075



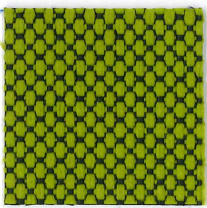
7008



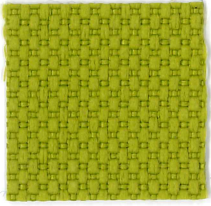
7508



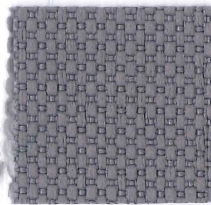
7041



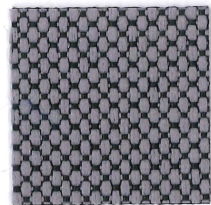
7541



7025



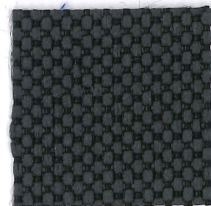
8032



8532



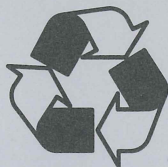
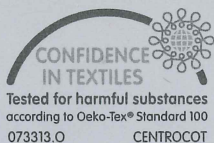
8017



8517



8033

**COMPOSIZIONE**

100% Poliestere FR

Le proprietà ignifughe sono intrinseche nella fibra.

**PESO**560 ± 5% g/ml  
400 ± 5% g/m<sup>2</sup>**ALTEZZA**

140 ± 2% cm

**RESISTENZA ALL'ABRASIONE**(Martindale)  
UNI EN ISO 12947/2  
80.000 ± 10% cicli**PILLING**UNI EN ISO 12945/2  
5 (foto standard)  
Tolleranza: da 4 a 5**SOLIDITÀ ALLA LUCE**UNI EN ISO 105-B02  
6 (scala blu)  
Tolleranza: da 5 a 8**SOLIDITÀ ALLO SFREGAMENTO**UNI EN ISO 105-X12  
4/5 (scala grigi)  
Tolleranza: da 4 a 5**REAZIONI AL FUOCO**C1  
B1  
M1  
CRIB 5  
EN 1021/1-2  
BS 7176 Medium Hazard  
NF D 60013 Class AM 18

Il grado di resistenza al fuoco dipende dal tipo di schiuma utilizzata

**COLORE**

Leggere differenze di colore fra una partita e l'altra sono da considerarsi normali

**MANUTENZIONE E LAVAGGIO****COMPOSITION**

100% Polyester FR

The flame-retardant properties are inherent to the fibre.

**WEIGHT**560 ± 5% g/lm  
400 ± 5% g/m<sup>2</sup>**WIDTH**

140 ± 2% cm

**ABRASION RESISTANCE**(Martindale)  
UNI EN ISO 12947/2  
80.000 ± 10% rubs**PILLING**UNI EN ISO 12945/2  
5 (standard pictures)  
Tolerance: from 4 to 5**LIGHT FASTNESS**UNI EN ISO 105-B02  
6 (blue scale)  
Tolerance: from 5 to 8**FASTNESS TO RUBBING**UNI EN ISO 105-X12  
4/5 (grey scale)  
Tolerance: from 4 to 5**FLAMMABILITY**C1  
B1  
M1  
CRIB 5  
EN 1021/1-2  
BS 7176 Medium Hazard  
NF D 60013 Class AM 18

Flame retardant performance is dependent upon the foam used

**COLOUR**

Slight color differences between one lot and another have to be considered within commercial tolerance

**CLEANING AND WASHING****COMPOSITION**

100% Polyestere FR

La qualité ininflammable est une caractéristique de la fibre.

**POIDS**560 ± 5% g/ml  
400 ± 5% g/m<sup>2</sup>**LARGEUR**

140 ± 2% cm

**RÉSISTANCE À L'ABRASION**(Martindale)  
UNI EN ISO 12947/2  
80.000 ± 10% tours**PILLING**UNI EN ISO 12945/2  
5 (photos standard)  
Tolérance: de 4 à 5**SOLIDITÉ À LA LUMIÈRE**UNI EN ISO 105-B02  
6 (échelle des bleu)  
Tolérance: de 5 à 8**SOLIDITÉ AU FROTTEMENT**UNI EN ISO 105-X12  
4/5 (échelle des gris)  
Tolérance: de 4 à 5**CLASSEMENT AU FEU**C1  
B1  
M1  
CRIB 5  
EN 1021/1-2  
BS 7176 Medium Hazard  
NF D 60013 Class AM 18

Performance de flammabilité dépend de la mousse utilisée

**COLORIS**

Légères différences de couleur entre un lot et l'autre doivent être considérés comme étant normales

**NETTOYAGE ET LAVAGE****ZUSAMMENSETZUNG**

100% Polyestere FR

Diese flammhemmenden Eigenschaften sind durch die Faser bedingt.

**GEWICHT**560 ± 5% g/lml  
400 ± 5% g/m<sup>2</sup>**BREITE**

140 ± 2% cm

**SCHUEUFESTIGKEIT**(Martindale)  
UNI EN ISO 12947/2  
80.000 ± 10% Scheuertouren**PILLING**UNI EN ISO 12945/2  
5 (standard Bilder)  
Toleranz: von 4 bis 5**LICHTECHTHEIT**UNI EN ISO 105-B02  
6 (Blaumaßstabe)  
Toleranz: von 5 bis 8**REIBECHTHEIT**UNI EN ISO 105-X12  
4/5 (Graumaßstabe)  
Toleranz: von 4 bis 5**FEUERSICHERUNG**C1  
B1  
M1  
CRIB 5  
EN 1021/1-2  
BS 7176 Medium Hazard  
NF D 60013 Class AM 18

Schwerentflammbarkeit hängt von verwendetem schaum ab

**FARBABWEICHUNGEN**

Leichte Farbunterschiede sind zwischen zwei Partien als normal zu betrachten

**REINIGUNG UND WASCHEN**